

Softmod Installer Deluxe v5.0

Official Users Manual



DISCLAIMER: We do not take any responsibility for any damage or loss of data that may be caused by this program. Always only use at your own risk, and remember to read this manual **CAREFULLY** before proceeding to use this package. If you do not read this and do something incorrectly, it is your own fault.

This document is not affiliated with Microsoft Corporation.
'Microsoft' and 'Xbox' are trademarks of Microsoft Corporation.

GNU General Public Licence

Auto-Installer Deluxe and Softmod Installer Deluxe are used for learning purposes on the Xbox Console. Copyright (C) 2004,2005,2006,2007
Author: DJB

This program is free software; you can redistribute it under the terms of the GNU General Public License as published by the Free Software Foundation; either version 2 of the License, or (at your option) any later version.

This program is distributed in the hope that it will be useful, but WITHOUT ANY WARRANTY; without even the implied warranty of MERCHANTABILITY or FITNESS FOR A PARTICULAR PURPOSE. See the GNU General Public License for more details.

You should have received a copy of the GNU General Public License along with this program; if not, write to the Free Software Foundation, Inc.,
51 Franklin St, Fifth Floor, Boston, MA, 02110-1301 USA

TABLE OF CONTENTS:

Chapter 1: Introduction.....	1
Chapter 2: Technical Information.....	1
Chapter 3: Features.....	1
Chapter 4: Checking your Dashboard Version	2
Chapter 5: Installing SID 5 on your Xbox.....	3
Copying the Gamesave to your Memory Card / USB Device	3
Copying the Gamesave to your Xbox.....	3
Chapter 6: Running the Game Save via the Game.....	5
007 Agent under Fire	5
Mechassault	6
Splinter Cell.....	6
Chapter 7: The SID 5 Final Main Menu.....	7
Chapter 8: Backup and Restore.	8
Chapter 9: Installing the Softmod	9
Single Boot Softmods.....	9
Dual Boot Softmods.....	9
Chapter 10: Removing the Softmod.....	10
Chapter 11: Virtual Eeprom Patching	11
Appendix A: Xbox Error Codes.....	15
Appendix B: Softmodding Tutorials	16
Hard Drive Upgrade using a Modchipped Xbox	16
Hard Drive Upgrade using a PC	17
Hotswap Tutorial - Recover a HDD without Eeprom Backup	18
Hard Drive Cloning using Chimp	19
Appendix C: Frequently Asked Questions	20
Credits	22

Chapter 1: Introduction

Welcome to Softmod Installer Deluxe 5, the last version of the SID series.

This package is designed to mod your Xbox by loading the SID Gamesaves on to your Xbox, and then launching them by game you select from the list below. After this, your Xbox will now be ready to load on all the Homebrew software and emulators available from Auto-Installer Deluxe (AID) or from other locations on the internet.

You will need a Memory Card (or compatible USB stick), and one of these three games in order to complete the Softmod:

- * Splinter Cell 1 (Not Pandora Tomorrow or Chaos Theory)
- * James Bond 007 Agent under Fire
- * Mechassault

Instructions on how to copy the Gamesave to your Xbox is found later on in this manual.

This version is similar to SID 4.5 in the way that it manipulates the LED to show what state your Xbox is currently booted in, below is a description of the different states.

ORANGE means that your Xbox is in Softmod state. Please note Xbox Live is blocked for this state to protect your Xbox from being banned.

RED means that your Xbox is accessing the Softmod menu via the Tray Open boot (in other words, starting your Xbox by pressing the Eject button). If you have accessed the Softmod menu while the LED is Orange it is still fine.

GREEN means that your Xbox is running in Retail state, and will let you connect to Xbox Live. Please note in order to use Xbox Live you must have your Xbox Live account set up before you Softmod your Xbox, otherwise it will not work properly.

Now, if the LED is **FLASHING** and the Xbox is not reporting any Errors (The typical 2-digit number and multilingual service screen), it could be something just as simple as the Clock on the MS Dash, so by setting that correctly it should get rid of the flashing state. I've also found just turning the box off and on again can correct it also.

Chapter 2: Technical Information

Softmod Installer Deluxe 5 was created using the UnleashX v0.39.0212 Build 570 and NKPatcher11 U03 (vga10 xman954 version).

NKpatcher (the Softmod itself) has been configured with LBA48 support (120 GB for F Drive and the rest on G) as standard for all installations and for booting the Softmod.

When the Softmod is installed, it will install files to a folder called SID5 on your C Drive. This includes the loader, and if installed the Virtual C and Virtual Eeprom file.

Chapter 3: Features

Here's the list of features that come with SID 5:

- Installs a Single Boot or Dual Boot Softmod. Dual Boots included are:
 - Hacked Dash (Closed Tray) – SID 5 Menu (Open Tray)
 - Hacked Dash (Closed Tray) – MS Dashboard w/Xbox Live (Open Tray)
- Virtual C / Virtual Eeprom is optional
- High-Definition Support
- Backup / Restore options for Hard Drive and Eeprom
- Rescue Dashboard installed as a safeguard
- Uninstall option

Chapter 4: Checking your Dashboard Version

To make your job easier the Softmod Installer, it is recommended that you use the latest version of Xbox Dashboard which is available (1.00.5960.01). This is how you would check your Xbox's Dashboard version.



' MS Retail Dashboard '



' MS Dashboard Settings Screen '

1) Click on the **Settings** button on your Xbox Dash, press **A**.

2) Scroll down to the **System Info** at the bottom of the next menu, press **A**.

The System Info screen will give you all the information you need to know about your Xbox console including your kernel version and dashboard version.



' MS Dashboard System Info Screen '

3) In the system info it will display your **Dashboard** versions This is a screenshot of something similar to what you will want to see. The section highlighted in red shows you what your Dashboard version is. If the Xbox is not showing this version (1.00.5960.00), and you wish to keep this dashboard, you will have to use the **Auto-Installer Deluxe 4.0** DVD to finish off your installation.

Alternatively you can try loading a game such as *Halo 2*, *Burnout Revenge*, *Splinter Cell 2* or *3* (1 is too old), and this can update your dashboard for you.

Chapter 5: Installing SID 5 on your Xbox

Copying the Gamesave to your Memory Card / USB Device

The most popular ways to install the Gamesave are the following:

Action Replay: [US Official Website](#) - [European Official Website](#)

Mega X-Key: [Official Website](#)

Just a quick tip about memory cards, reports have come in about 3rd-party cards not working properly, you can check the [Xbox-Hq Memory Card Database](#) for more information. The most reliable way would be a Mega X-Key in my opinion, which uses the same format as Action Replay for Gamesave.

To copy the game save over to your device, these programs support the drag and drop feature just like Windows. So, open your desired program and then drag and drop the .zip or .gsx file to the memory card. In about half a minute or so it should be done.

There are 5 files in the SID package, you will need to transfer TWO of these to your Xbox (this is a little different from the older SID systems so please beware). You need the main installer file, and the Gamesave for the game you wish to use. Here's what the files do:

SID5.Installer	← The main Installer
SID5.Loader.007AUF	← Loader for 007 Agent Under Fire
SID5.Loader.Mechassault	← Loader for Mechassault
SID5.Loader.SplinterCell.NTSC	← Loader for Splinter Cell (NTSC Version)
SID5.Loader.SplinterCell.PAL	← Loader for Splinter Cell (PAL Version)

Copying the Gamesave to your Xbox

Insert your USB Device or memory card into your Xbox before you start it up. Once you've started your Xbox, the MS dashboard should appear.

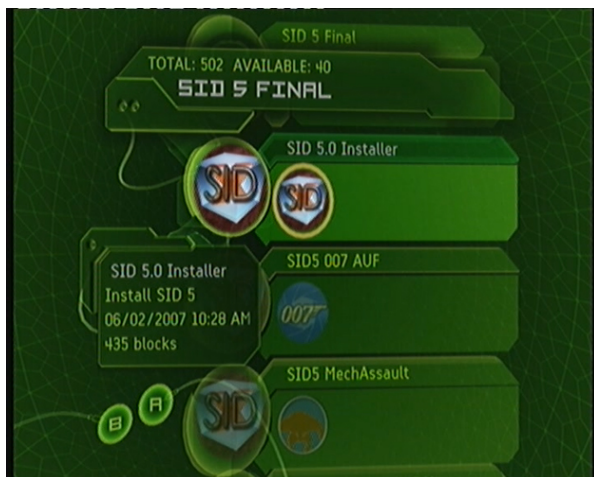


‘ MS Retail Dashboard ‘

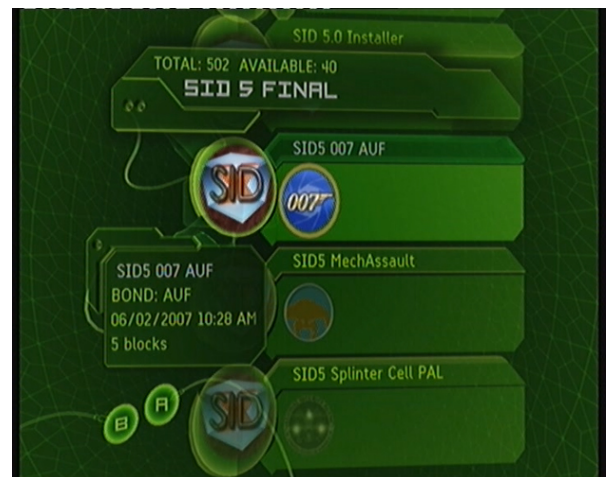


‘ MS Dashboard Memory Screen ‘

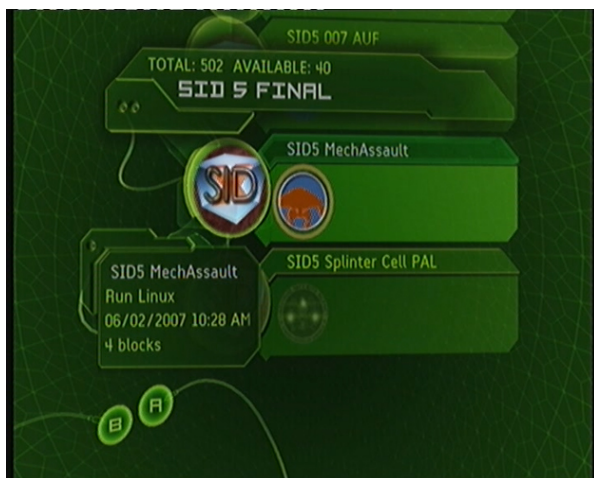
- 1) Select Memory from the menu and press A.
- 2) Now, select the memory card that you inserted and press A.
- 3) Shown below are screenshots of each Gamesave. Select the Gamesave you want to copy to your Xbox HDD by pressing the A button on your Xbox controller. A Menu will appear.



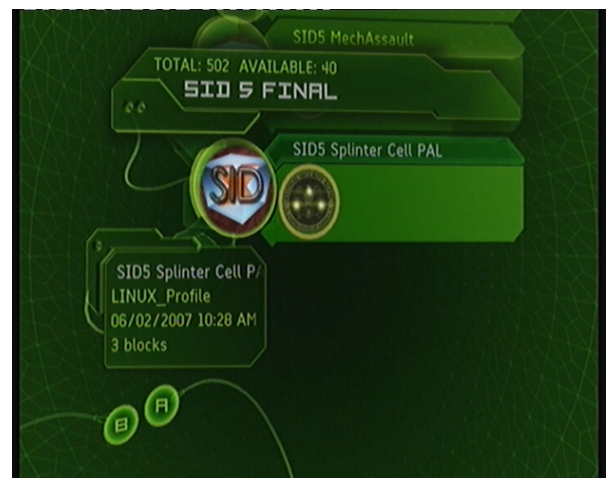
' SID 5 Installer '



' 007 Agent Under Fire '

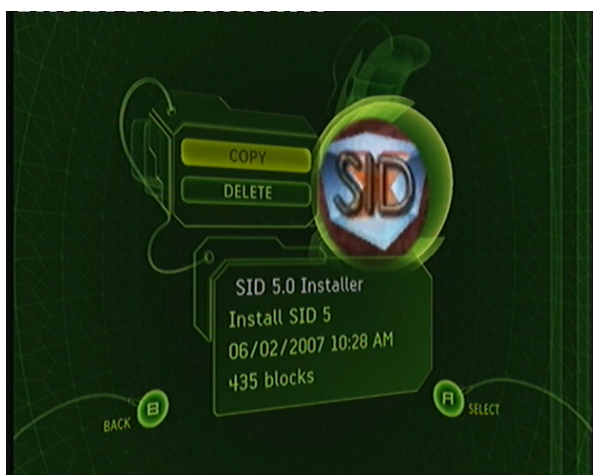
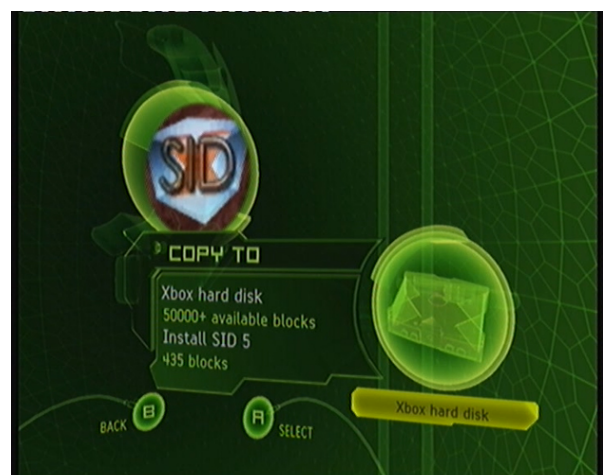


' Mechassault '



' Splinter Cell (PAL) '

4) Choose the copy icon (as shown in the images below) and press A to copy the Gamesave you have selected to the Xbox. We are using 007 as an example. Be sure to check your Xbox region if you are using Splinter Cell. Eg. NTSC/PAL.

' Choose **Copy** and Press **A** '' Select the **Xbox Hard Disk** and Press **A** '

5) Once you have successfully copied over all required Gamesave to your Xbox HDD you can now continue to boot the original game (007, Mechassault, or Splinter Cell) and install your Softmod. Restart your Xbox and load the game of your choice into your Xbox DVD-Rom drive.

Chapter 6: Running the Game Save via the Game

The following screenshots show what you have to do to launch the Softmod installer. If you see any other screens besides this, something is obviously gone wrong with transferring the game to the Xbox, or you don't have the correct version of the game.

007 Agent under Fire



' 007 Main Menu Screen '



' 007 Load Mission Screen '

1) Once the game is at the main menu, select the **Load Mission** option...

2) Now select the **Xbox Hard Drive** option (which loads the Gamesave from HDD).



' 007 Loading Mission Screen '

3) It will show a loading screen to confirm it is working.

Mechassault



' Mechassault Main Menu Screen '



' Mechassault Campaign Screen '

- 1) Once the game is at the main menu, select the **Campaign** option...

- 2) Now select the **Run Linux** Gamesave.

Please note that the following information **MUST** be the same on your Xbox otherwise you have got a bad copy of Mechassault.

Controls: Normal
Difficulty: Regular
Current Level: Going Down Hard

Splinter Cell



' Splinter Cell Main Menu Screen '



' Splinter Cell Start Game Screen '

- 1) Once the game is at the main menu, select the **Start Game** option...

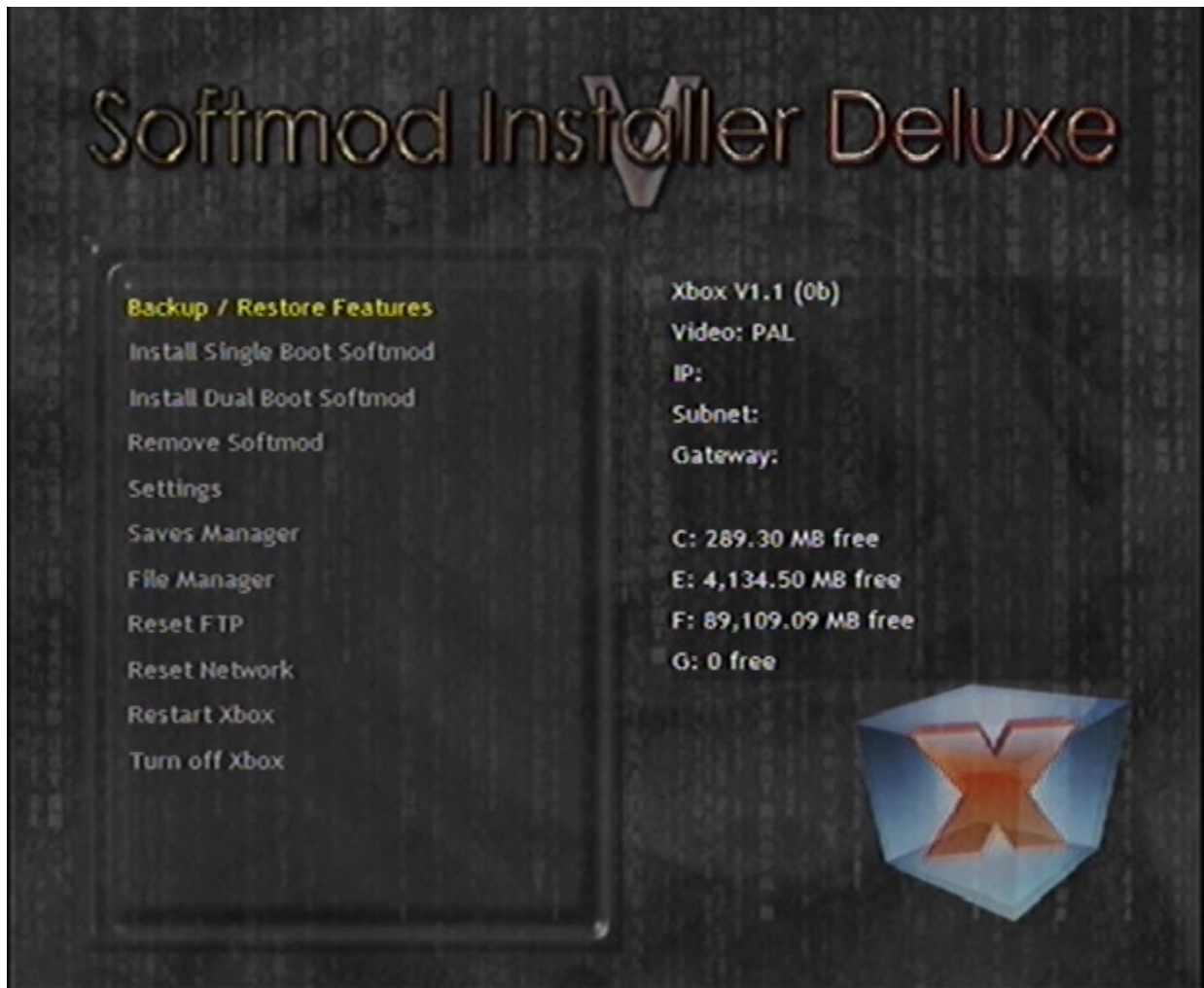
- 2) Now select the **Linux** Gamesave.

- 3) Select the **Checkpoints** option.



" Splinter Cell Checkpoints / Levels Screen '

Chapter 7: The SID 5 Final Main Menu



All menus will be self explanatory, and will go to the point, but make sure of the following tips to complete a successful softmod.

1. - Must have a retail MS Backup, either made by this installer or a previous SID installer that supports the target E:\backup\MS\, this backup must not be modded, and must have retail files, no dash version is specified if not installing Ndure.
- 2.- If you plan to Install the Dual Boot with MS Dash, YOU MUST have MS Dash 5960 either in your MS Backup or your True C drive (newest 1.6 Xboxes have this).
3. - Backup of your EEPROM must be made no matter what to complete the install. This is due to the fact that an eeprom backup is needed to be patched, and put into your hidden boot files to be loaded with the all new nkpatcher system, allowing this eeprom to be loaded instead of your real one to prevent apps from unlocking your HDD, and if you mess with your eeprom, then it's just your virtual eeprom and not the real one, leading to a broken Xbox.
4. - The Uninstall Feature is picky. You must have a retail, non modded, MS Backup to it can proceed, it also pay attention to what it tell you, so you don't make mistakes, and you select "YES" or "NO" wisely.

Please be aware that SID 5 will take around 15-30 seconds to install a file called "shadowc.img", so if you see that it looks like if it froze, don't panic, and let it run.

Chapter 8: Backup and Restore.



You have options to backup and restore your ms dash, as well as your softmod, but you may not restore your mod backup if an MS Backup is not present, so some limitations are there to prevent you from messing up your softmod, or losing valuable files of your Xbox.

If you plan to use Xbox Live!, you don't need to do this, simply install the Dualboot MS Dash feature, but make sure you have an account before you do, cause once softmod is install, you cannot make an account.

Chapter 9: Installing the Softmod

Single Boot Softmods

These are the single-boot options available to you:

- Standard
- Standard for HD
- Virtual C + Eeprom
- Virtual C + Eeprom for HD

You'll notice that you have two new options compared to the One-Click Install System. Installing the Softmod for HD (High Definition) means that your Softmod will be set so your Xbox is best displayed with a High Definition TV.

You only get the options to install EvolutionX or UnleashX in this section, but you can easily go back to the **Install Dashboards** section and change it (to XBMC for example).

One small rule, when installing a Softmod with Virtual C, don't select a Softmod Dashboard, because the Softmod tricks your Xbox into thinking that the C Drive is still stock (unmodded), so in order to access the MS Dash properly you need to remember this.

Dual Boot Softmods

Unlike the Single-Boot Softmod, the Dual-Boot offers much more flexibility.

The two options you have are:

- Hacked Dash / Softmod Menu
- Hacked Dash / MS Dash

You firstly have the option on how you want to control your Dual Boot. After selecting this, you will proceed to the same options as the Single Boot.

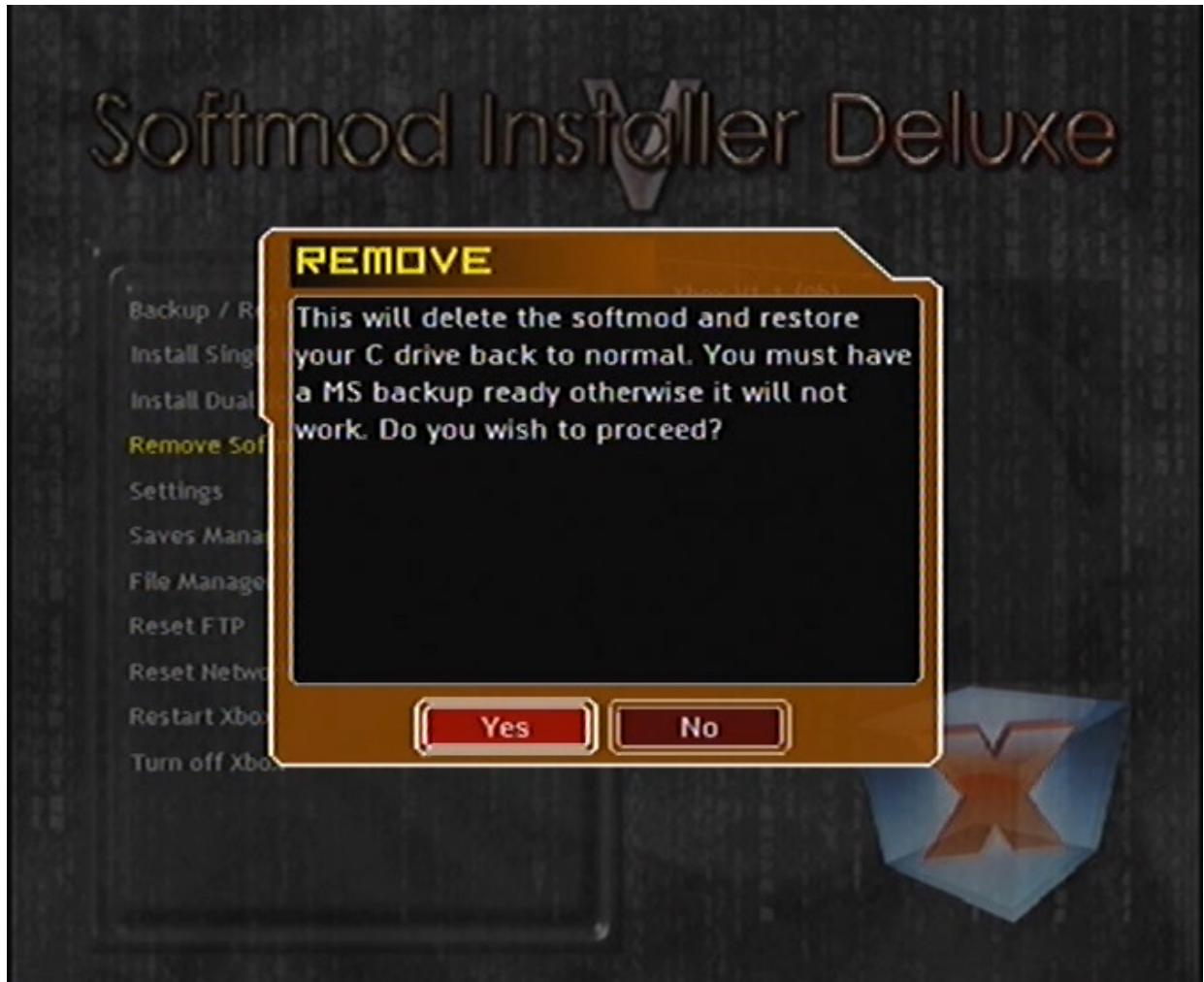
Please note when you use the **Hacked Dash / Softmod Menu** option, when you boot your Xbox in this state, any Virtual C Drive is turned OFF leaving it exposed. You may not want to use this option if there's a possibility that your Xbox can be used by someone that could easily format it on you.

The **Hacked Dash / MS Dash** option allows you to use Xbox Live properly (only with Original Games though). For this to work correctly, you must have your Xbox unmodded to set up your Xbox Live Account. Once this is done, you can proceed to apply the Softmod to your Xbox.

Chapter 10: Removing the Softmod.

This is by far the easiest thing to do if you use the installer, simply have you MS Backup not modded, and run "Uninstall Softmod" and all will be done automatically, just make sure you read the onscreen options so you don't run into any mistakes when it comes to deleting all other files on E:\.

The Uninstall feature will do it all for you, but you'll get prompt for special actions, on prompts, you don't have to say "YES" unless it's what you want to do.



Chapter 11: Virtual Eeprom Patching

This chapter will teach you how to set up your eeprom after the install of SID 5 if you want that extra step in the security of a softmod.

WARNING!!!

"X-Man9" from www.xbox-scene.com official developer of the nkpatcher systems after Rmenhal, has stated that some games cannot keep Xbox Live! Data in HDD if your Xbox HDD is nulled, we haven't had any issues, but he has stated that games like "Ghost Recon" will automatically delete your Xbox Live! Maps from your HDD if your HDD serial is not valid.

We will not be held responsible for data loss, do this at your own risk.

STEP 1: Getting to access true files on your Xbox C drive.

First you must understand how FTP works, this tutorial will not teach you how to FTP.

First you must have an nkpatcher *.xbe loaded that will not mount the virtual, this *.xbe can easily be the one you booted SID 4.5 and it's how this tutorial will show it to you.

1. - Cold boot game of Choice or use a file manager to navigate to save.
2. - If you boot SID 5 from game of exploit, simply fix your Network Settings to a proper way to access your Xbox from FTP. If your going to use a file manager, the file to be executed is NOT menu.xbe, you'll execute "install.xbe", this file is nkpatcher 11-01 with no virtual mounts. Directory for manual boot is: E:\UDATA\21585554\00000000000000\
3. - you'll get the eeprom.bin found in C:\SID5\ from your real partition, to know if it's your real partition, you should be able to see the following files (not all files or folders are mentioned here).

\Audio

\SID5

\fonts

\xboxdashdata.185ead00

\xodash

\Xbox Book.xtf

\Xbox.xtf

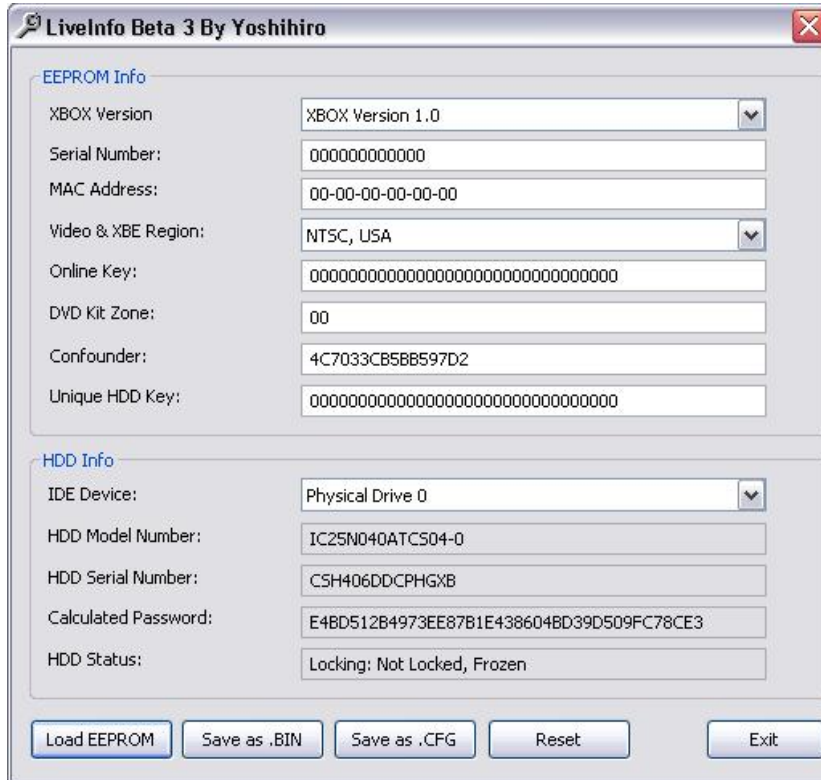
\xboxdash.xbe

←---- This is where the files are located

STEP 2: Making Changes on the eeprom.bin dump

First you'll open up LiveInfo.exe. (This tutorial should have it for you, if it doesn't, please download in either Xbins, Xbox-Hq downloads, or any other place that hosts these files for you.

This is how live info will open up to be like.



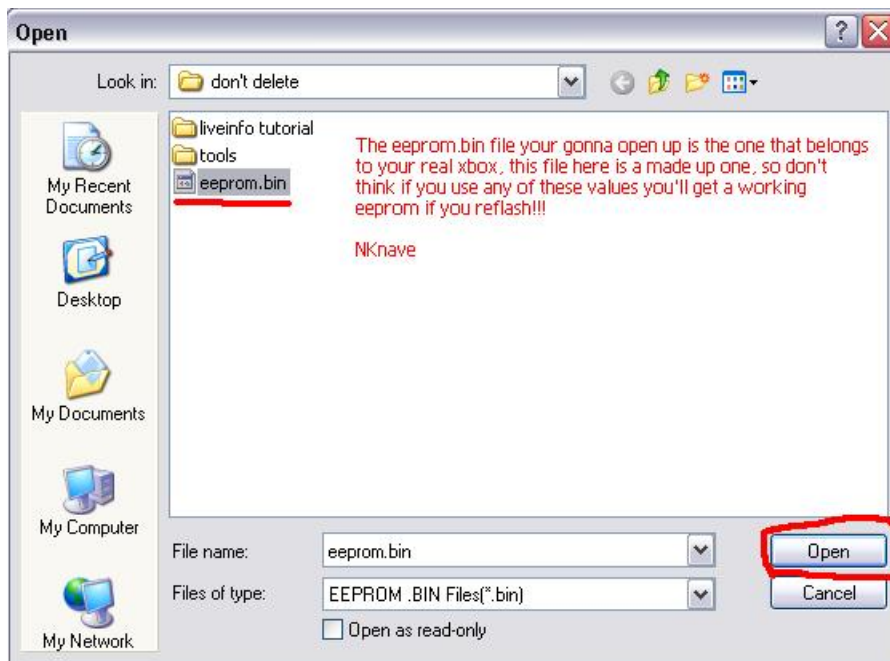
The screenshot shows the 'LiveInfo Beta 3 By Yoshihiro' application window. It has two main sections: 'EEPROM Info' and 'HDD Info'. The 'EEPROM Info' section contains fields for XBOX Version (XBOX Version 1.0), Serial Number (000000000000), MAC Address (00-00-00-00-00-00), Video & XBE Region (NTSC, USA), Online Key (00000000000000000000000000000000), DVD Kit Zone (00), Confounder (4C7033CB5BB597D2), and Unique HDD Key (00000000000000000000000000000000). The 'HDD Info' section contains fields for IDE Device (Physical Drive 0), HDD Model Number (IC25N040ATCS04-0), HDD Serial Number (CSH406DDCPHGXB), Calculated Password (E4BD512B4973EE87B1E438604BD39D509FC78CE3), and HDD Status (Locking: Not Locked, Frozen). At the bottom, there are five buttons: 'Load EEPROM', 'Save as .BIN', 'Save as .CFG', 'Reset', and 'Exit'.

This is usually how you'll see it when it opens up. Now the Next pictures will go in order as you must follow the tutorial, if you already familiar with Live Info, just go to the last picture to see what needs to be done.

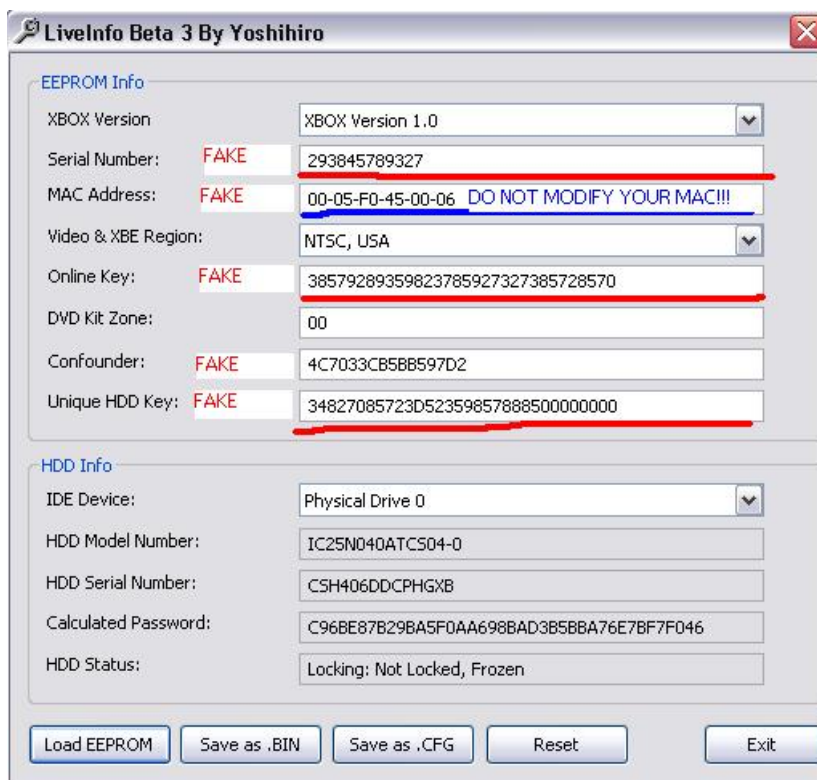


This screenshot is identical to the one above, showing the 'LiveInfo Beta 3 By Yoshihiro' application window. The 'Load EEPROM' button at the bottom left is highlighted with a red rectangular box.

Open the File by choosing "Load EEPROM"



This picture will show you what need modification and WHAT NOT to modify. MAC address is very important, as well as the hash of the eeprom to be a valid file, this is the reason why we are doing this manually, since most of the PAL users can't get a good eeprom patch by previous versions.



This is what's to be modified. You don't have to make them all Zeros, it can be anything randomly, just make sure you don't randomly make it correct.

LiveInfo Beta 3 By Yoshihiro

EEPROM Info

XBOX Version: XBOX Version 1.0

Serial Number: 000000000000

MAC Address: 00-05-F0-45-00-06

Video & XBE Region: NTSC, USA

Online Key: 00000000000000000000000000000000

DVD Kit Zone: 00

Confounder: 4C7033CB5BB597D2

Unique HDD Key: 00000000000000000000000000000000

HDD Info

IDE Device: Physical Drive 0

HDD Model Number: IC25N040ATCS04-0

HDD Serial Number: CSH406DDCPHGXB

Calculated Password: C96BE87B29BA5F0AA698BAD3B5BBA76E7BF7F046

HDD Status: Locking: Not Locked, Frozen

Buttons: Load EEPROM, Save as .BIN, Save as .CFG, Reset, Exit

After all this is done, simply use the "Save as .BIN" and either overwrite the old eeprom.bin or name it differently, just make sure you have a proper backup of the eeprom your self, and not the modified, if you try to make new HDD with this modified eeprom you'll never get it to work, since it's only going to give you invalid HDD keys, and your HDD will result in error 06 on your Xbox.

Make sure that you FTP the modified file named eeprom.bin to overwrite the old file in C:\SID5\, after you have completed this, simply turn off Xbox, and power back on, most apps/dashes including ConfigMagic will display your unlock key, but when it's time to call the eeprom to unlock is when it will fail. To see if your changes are in fact active, please use ConfigMagic, and see what you get onscreen, UnleashX and other dashes will always display the correct unlock key in the settings or info screen.

Appendix A: Xbox Error Codes

Error	Cause	Description
01	Bootloader	Motherboard Error
02	Bootloader	Eeprom check failed
03	Bootloader	Unknown
04	Bootloader	Ram check failed
05	Kernel	HDD not locked (retail BIOSes require the HDD to be locked)
06	Kernel	Cannot unlock HDD
07	Kernel	HDD timeout
08	Kernel	HDD not found
09	Kernel	HDD parameters (PIO/DMA/or size {debug} , certain size minimum is required for debug)
10	Kernel	DVD drive timeout
11	Kernel	DVD not found
12	Kernel	DVD parameters (PIO/DMA)
13	Kernel	Dashboard launch fail (due to missing/bad key, or anything else that would prevent it from running) and the dashboard didn't specify why it failed
14	Dashboard	Error loading dashboard (dashboard generic error)
15	Kernel	Unknown
16	Dashboard	Other files to do with dashboard / dashboard settings (specific dashboard error)
17	Kernel	Unknown
18	Kernel	Unknown
19	Kernel	Unknown
20	Kernel	The dashboard has attempted to load and failed: It was a cold boot, and the dashboard didn't specify why it failed, but it (for some reason) needed to be noted that the DVD passed the challenge/response authentication
21	Anywhere	Typically means you're missing .dip files on your c: Drive or you have .xip's from a different (wrong) dashboard version. To fix simply restore a complete backup of the c: drive.

Appendix B: Softmodding Tutorials

Special thanks to Pirrup for these tutorials.

Hard Drive Upgrade using a Modchipped Xbox

Hardware Needed:

- Hex Screwdriver Set
- Computer
- A modded Xbox (chip)
- A softmodded Xbox with retail disk.
- A bigger HDD

Software Needed:

- FTP software (FlashFXP)
- EvoX dash (to make eeprom backup, install it on both Xboxes)
- Xbox-HQ Auto Installer Deluxe Boot Disk.
- Config magic (install it on chipped and softmodded Xbox)

Steps:

1. Use EvoX to make an eeprom backup from your chipped Xbox and the softmodded Xbox (you can install EvoX as a dashboard)
2. FTP the backup Eeproms to your PC, also transfer your C and E drive (softmodded Xbox) to your pc.
3. Put the big HDD you need to prepare in your chipped Xbox.
4. Run Xbox-Hq Auto Installer Deluxe Boot Disk and make the big HD ready. (Don't forget to install Config magic on this HDD)
5. Open the Config magic folder and delete the contents in the data folder and transfer your backup of the C and E drive to the data folder.
6. Update your chipped Xbox eeprom from the bin file. (Eeprom backup from softmodded Xbox).
7. Reboot the Xbox and open Config magic and lock the HDD. (Now it's locked with the eeprom from the softmodded Xbox)
8. Turn off Xbox and remove the big HDD out the chipped Xbox.
9. Put it in the softmodded Xbox

Now, the HDD will work in the softmodded Xbox.

*** Optional if you play on live with your chipped Xbox ***

10. Run Config magic again on the chipped box and update eeprom. (This time with the eeprom backup from chipped Xbox). This will restore your chipped Xbox eeprom back to original.

Hard Drive Upgrade using a PC

Hardware Needed:

- A PC, a blank CD-R/W and a CD Burner
- Torx 10 + Torx 20 Screwdrivers (to open your Xbox)
- A Large HDD

Software Needed:

- XboxHDM 1.9
- FTP Program (FlashFXP)
- EvoX dash (can be installed as an app)
- DVD Decrypter

Steps:

1. First make a backup from your retail disk (C, E drive and your eeprom), you can use EvoX to backup eeprom (eeprom backup can be found on E).
2. FTP your backup data to your PC using a FTP program.
3. Unpack XboxHDM onto your pc
4. Put the eeprom backup in the xboxhdm\linux\eeeprom folder, put C and E folder into the xboxhdm\linux folder and overwrite the ones already there.
5. In the root of xboxhdm is a file named 'make-iso-win', run this file and wait for it to finish.
6. It will make an .iso file. (You can burn this file with DVD Decrypter)
7. Take out all your hard disks in your PC and put the new hard disk (for the Xbox), make sure its primary master and first boot is CD-ROM.
8. Put the disk you made in the CD-ROM drive and boot your PC.
9. You will get a menu, now choose Option 1 (by typing "1") and press enter to boot VGA console with Xbox-drive utilities (default). Type "xboxhd" when it asks you for a login. Another list of options will show up, choose option 1 again (the one that says "Build a new Xbox HD from scratch") and it will begin to format and write the partition table etc. If you put your C:\ and E:\ onto the CD then when it asks you about them type yes and when it asks you if you would like an F select yes.
10. Reboot your PC (we are almost done)
11. Now for locking the hard drive. This time type "3" and hit enter to boot Linux with locking/unlocking utilities. Next, type in "lockhd -a". It will now search for the eeprom on the CD and will automatically lock the hard drive. Now turn off the PC and take out the hard drive when it has finished locking. Put the disk in your softmodded Xbox.

You just upgraded your hard drive and can be used in your softmodded Xbox.

Hotswap Tutorial - Recover a HDD without Eeprom Backup

Hardware Needed:

- A PC (remove all HDD's), blank CD-R/W and A CD Burner
- Torx 10 And Torx 20 Screwdrivers - To Open XBOX

Software Needed:

- XboxHDM 1.9
- DVDdecryptor (<http://www.dvddecrypter.com>)
- C drive backup or latest MS dash

IMPORTANT: Make sure the Xbox and PC are close to each other

Steps:

1. If you got a backup of your C you don't need to download latest MS Dash, if you don't have a backup download MS Dash and keep it ready on your PC.
2. Unpack xboxhdm onto your PC.
3. Put the MS Dash in the C folder into the xboxhdm\linux folder and overwrite the ones already there.
4. In the root of xboxhdm is a file named 'make-iso-win', run this file and wait for it to finish. It will make an .iso file.
5. Burn this file with DVD Decrypter, and leave the CD in the PC.
6. Unplug the Xbox DVD-ROM IDE cable, take the power cable off the DVD-ROM.
7. Turn on the PC, Before the PC BIOS looks for Hard Drives, hit the Pause/Break key. It should pause at this time.
8. Turn on the Xbox.
9. It will boot to an error code (#11) regarding the DVD-ROM, but the Hard Drive will be unlocked, this way you'll get xboxhdm to access it on first attempt
10. Hit space bar to continue booting the PC. If it takes a long time to boot (several minutes), then the HD has not been unlocked.
11. You will get a menu, now choose Option 1 (by typing '1') and press enter to boot VGA console with Xbox-drive utilities (default). Type 'xboxhd' when it asks you for a login. Another list of options will show up, choose option 1 again (the one that says 'Build a new Xbox HD from scratch') and it will begin to format and write the partition table etc. when it asks you about C type yes and when it asks you if you would like an F select yes .
12. Power down PC and Xbox.
13. Put the Hard Drive back in the Xbox and boot.

PLEASE NOTE: If you get a message about a frozen drive, just disable auto detect for the drive (xboxhdm will detect the HDD even if it's disabled!)

Hard Drive Cloning using Chimp

Hardware Needed:

1. A Y power splitter (or use an external power source for the second HD, like another PC or external disk box etc.)
2. Torx 10, 15, 20 Screwdrivers to open Xbox and replace the HD

Software Needed:

3. Chimp (installed as an app)

Steps:

1. Open the box with the Torx 20 Screwdriver.
2. Use the Y splitter so both Hard Drives would have power when Xbox is on.
3. Loosen the DVD's IDE, but must still be bootable (it minimize the remove chance of IDE damaging as it is really not designed for hotplugging).
4. Boot Xbox.
5. Launch chimp.
6. Swap the IDE cable from DVD to the new HD.
7. Follow the menu (the first item must be run before others).

Xbox 1.6 problems?

If you have a 1.6 box and you can't see the Linux prog (graphics). In that case, you need to telnet into it, the menu will be same.

Appendix C: Frequently Asked Questions

I can't get gamesaves into the memory card with Action Replay?

Make sure you have original Microsoft Memory card or another brand that it's known to work, not all memory cards will allow files that's aren't game related to be added, like zips, rars and non-xbox default files. Also make sure you drag and drop 2 zips, the SID5 Launcher.zip and your game of choice, and you'll add both gamesaves to your xbox, since the launcher are the files that install the softmod, and the other gamesaves are to boot to Launcher, so no launcher and gamesave can lead to ERROR 21, black screen, or MS Dash reboot.

I get just a black screen when I boot it.

Make sure you only do it to retail xbox, that means no other softmods installed, if you have a previous softmod install, remove it and leave C in retail, all other files will not be affected, also make sure that's the only gamesave you have, and no other gamesaves in hdd of that 1 game. Another issue is that if you are trying to boot SID 5 when running modded from SID 2 or other PBL based softmod, it will lead to freeze or black screen, this is due to the fact that PBL doesn't allow nkpatcher to load, PLEASE BE IN RETAIL!

I can't install any of the softmods in SID 4!!!

Did you read the manual? Did you read the on-screen warnings?, It will NOT INSTALL if you don't have a retail MS Backup and eeprom made by the installer.

I can't install the Ndure.

Once again, did you read things right?, you CANNOT install unless you have MS Dash 5960 Installed on true C before install.

I successfully installed SID 5, but I can't use the retail mode to go on xbox live.

It should work, as it's proven to work, make sure you power on the xbox with eject button so it loads retail mode, wait till it loads MS Dash, and put game disc in, after ingame sign in with an already made xbox live! gamer tag account. YOU CANNOT MAKE AN ACCOUNT AFTER YOUR MODDED.

Why do I have to set my clock every time I power on the xbox?

You should only have to set it once after softmod is installed, and only after you unplugg after 4 hours. So make sure YOU SET YOUR CLOCK, and press "A" to save it to xbox, then IGR or power off, and on so it takes effects, that way you shoudn't have to set your clock again, unless of course you cut power for more than 4 hours.

When I FTP I can see F and G, but I can't access them.

You cannot access to what you dont' have, by default SID 4 is set to enable both of these so you don't have to worry about updating your lb48 patch etc, some xbox stock hdds have F, some have G, the only real way to know if you have an F, is by using file explorer with UnleashX or SID 5, and if you see F you have it, if you don't see F, then you don't!

When I boot retail mode, all I get is a hang, and black screen.

Make sure that ms dash was not modded at all, but here's a manual solution if you have this. Boot SID 5, use the file manager, go to C, and look for the file called: settings_adoc.xip, make sure you don't have it in C, or C:\xboxdashdata185ead00, this can make it hang, also this file is to be deleted automaticly by the installer, and it's also the reason why you must set your clock when you boot you xbox after the install of SID 4.

When I boot Ndure retail mode, all looks good, but I choose the xbox live tab from MS Dash and it goes to a black screen.

Simply is cause xbox live tab from MS dash loads it's own dash files from C:\xodash, but that's where the exploit fonts are located, so if you choose that it will freeze cause it will try to load the fonts again, leading to wanting to boot softmod, which will end up freezing, you will also get a black screen if you try to PUT A BACKUP GAME when running Ndure. In no way Ndure allows you to run backups in Xbox Live!. Use FuckMS for that, but we will not help you do this, and you can get into serious problems and get your credit card blacklisted if caught.

- Always sign in to xbox live from ingame, not from MS Dash.

I get "BATCH PROCESS FAILED"!!!

Then simply you need to read this manual over again and make sure you haven't missed anything.

Credits

Installer

Interface used UnleashX v0.38.0515 Build 565

Scripting & Graphics by DJB

Tested by DJB
Forahobby
Angelos Dracul

Documentation

Written by DJB
Nknave
Pirrup
Forahobby

Proof Read by DJB
Forahobby
FinalCloud